



Discover, Experience *and* Photograph

Premium Private Photo-oriented Tours in Tasmania



BOOKINGS +61 (0) 417 599 283 | info@shutterbugwalkabouts.com.au | www.shutterbugwalkabouts.com.au

All-inclusive premium private tours for nature and photo-enthusiasts (and discerning non-photographers too)

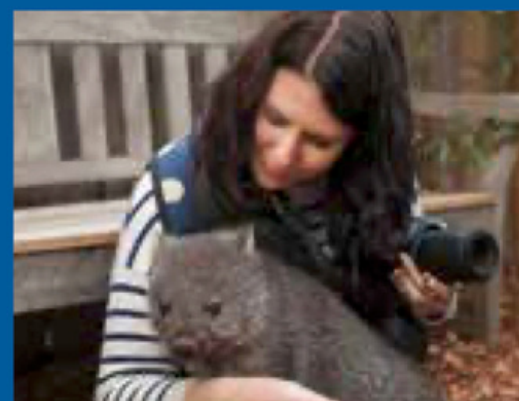


**shutterbug
walkabouts**

Discover, Experience *and* Photograph



Led by experienced professional nature guide
and accomplished photographer



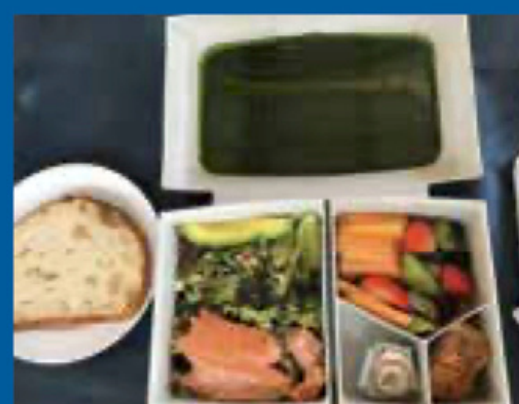
Authentic nature and wildlife experiences



Photo hints and tips for eye-catching
photos, not just snapshots



Stylish and spacious SUV
touring vehicle



Deluxe meals and refreshments
Dietary requirements and preferences catered for



Flexible, attentive approach and
relaxed pace touring



1. MT FIELD NATIONAL PARK

including Russell Falls
and Lake Dobson

2. BRUNY ISLAND

including Cape Bruny and
Adventure Bay

3. HARTZ MOUNTAINS & TAHUNE

including Tahune Airwalk and
forest reserve

4. MARIA ISLAND

including Fossil Cliffs
and Painted Cliffs

5. MOUNTAIN & WILDLIFE

Mount Wellington & Bonorong
Wildlife Sanctuary

6. TASMAN PENINSULA

including Coal Mines Historic Site
and Tessellated Pavement



shutterbug walkabouts

Discover, Experience *and* Photograph



shutterbug walkabouts

Discover, Experience *and* Photograph

Quick reference guide

Premium Private Photo-oriented Day Tours

Tour	Tour code	Duration	National Park	Nature walk	Birds & Wildlife	Rural countryside	Coastal	Waterfall	Rainforest	Alpine area	Historic site
Mt Field	PODT.1	9-10 hours									
Bruny Island	PODT.2	10-11 hours									
Hartz/Tahune	PODT.3	9-10 hours									
Maria Island	PODT.4	12 hours									
Mountain & Wildlife	PODT.5	9 hours									
Tasman Peninsula	PODT.6	9-10 hours									

MT FIELD NATIONAL PARK

including Russell Falls and Lake Dobson (PODT.1)



shutterbug walkabouts

Discover, Experience *and* Photograph

About

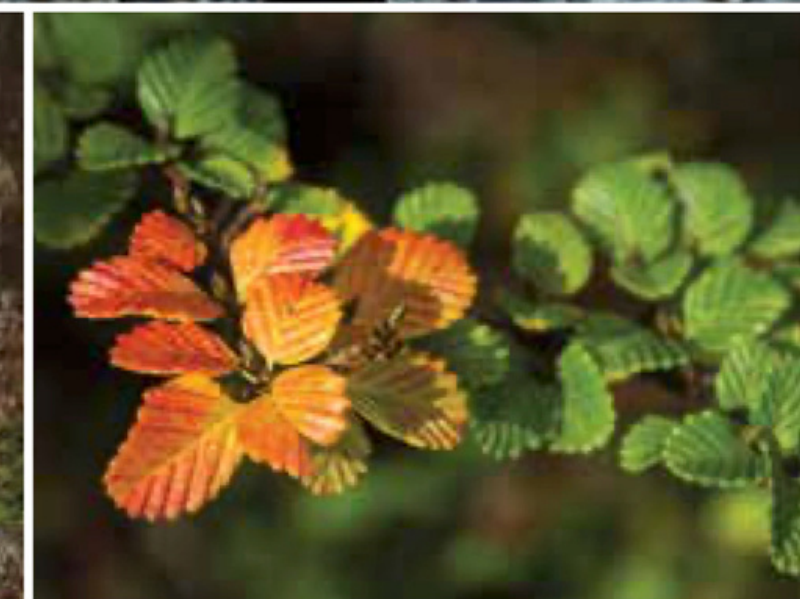
Mt Field National Park and its diverse wilderness wonders has captivated visitors for well over a hundred years. There's a fascinating array of natural treasures to focus on, including the much-loved Russell Falls. This tour takes our guests on a journey to explore lush rainforest, tall tree forests and glacial landscapes reminiscent of the Gondwana era.

Russell Falls is the main attraction, but there's much more to be seen and photographed. Unfurling fronds of tree-ferns, vibrant fungi and impressive lichens will inspire photographic creativity. An echidna may saunter nearby, a pademelon (wallaby) may be hiding in the forest undergrowth, an elusive platypus may appear in the stream. The enchanting Horseshoe Falls lures our guests to pause, and the towering eucalyptus trees will astonish.

The area around Lake Dobson is characterised by several Tasmanian endemic conifers including the Pencil Pine and King Billy Pine. There's a diversity of flora and an abundance of birds

and native wildlife too. Just as in the rainforest, this sub-alpine habitat reveals many a nature photo opportunity.

The journey to and from Mt Field passes through historic towns, nestled in a rural landscape of rolling green hills and rustic features. Photo stops en route are always encouraged.



MT FIELD NATIONAL PARK

including Russell Falls and Lake Dobson (PODT.1)



shutterbug walkabouts

Discover, Experience *and* Photograph

Highlights

- Majestic waterfalls – Russell Falls and Horseshoe Falls
- Explore Tasmania's cool-climate rainforest environment
- Stand in amazement beneath towering eucalyptus trees
- Be invigorated by sub-alpine habitat around Lake Dobson
- Wildlife encounters
- Birdwatching opportunities
- Seasonal variations
 - 'Turning of the fagus' (autumn)
 - A diversity of fungi and lichen
 - Snow-topped mountain scenery (winter)
 - Endemic plants and native flowers, incl. delicate orchids and Pandani
 - Tasmanian Waratah in bloom (summer)
- Picnic in the surrounds of breathtaking scenery
- Indulge in photo opportunities not achievable on regular tours

Includes

- Private transport in stylish and spacious SUV
- Professional local guide providing insightful commentary
- Fully guided interpretive nature walks
- Practical hints and tips offered throughout the day
- National Park entry
- Freshly baked sweet treat for morning tea
- Enticing picnic lunch featuring Tasmanian produce
- Locally roasted coffee and quality tea selection
- Premium Tasmanian non-alcoholic beverages
- Drinking water

Recommended departure

8.00am

Duration.

9-10 hours



BRUNY ISLAND

including Cape Bruny and Adventure Bay (PODT.2)



shutterbug walkabouts

Discover, Experience *and* Photograph

About

Bruny Island is an incredible place to visit at any time of the year. It's made up of two land masses known as North Bruny and South Bruny, joined by a long narrow isthmus known as 'The Neck'.

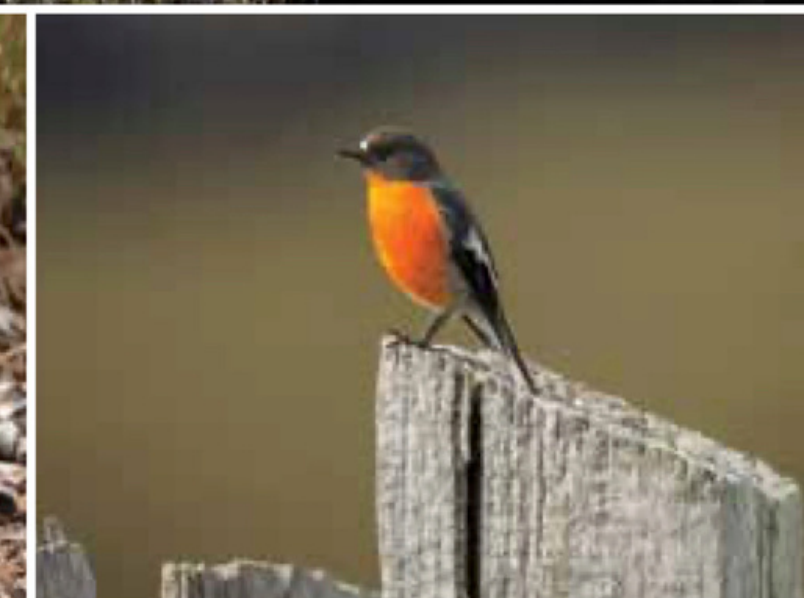
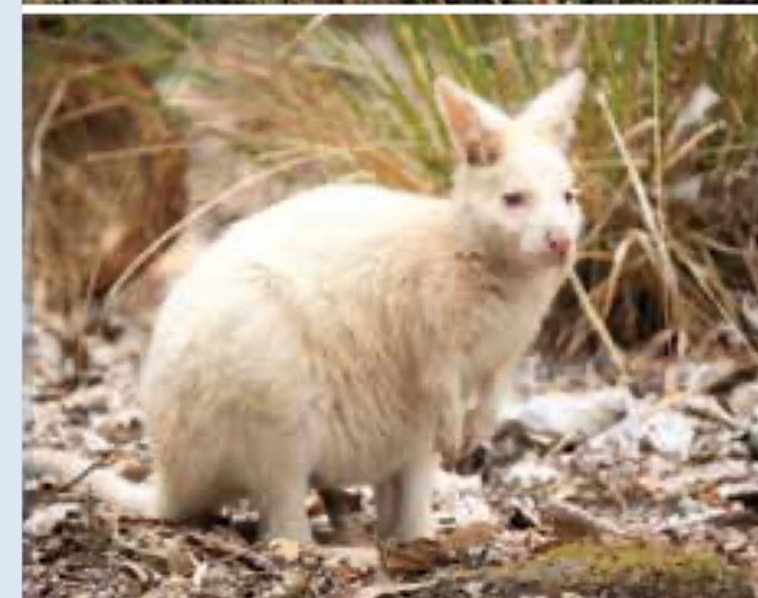
This tour offers an intriguing day of exploring Bruny's natural and built landscapes, history, wildlife, birds, and breathtaking scenery – with a diverse array of photo opportunities.

The views from 'The Neck' are nothing short of spectacular; the natural habitat for Little Penguins and Short-tailed Shearwaters is adjacent to the walkway and the pristine beach nearby invites photographic curiosity.

Cape Bruny is the site of Australia's second oldest lighthouse. Not only does it sit atop an impressive coastline, its history is captivating. The views draw your eye to the horizon – out to the Southern Ocean, and Antarctica! Raptors frequently soar above; smaller birds flit about in the coastal heathland as an echidna may mosey about at ground level.

We keep an eye out overhead for eagles soaring high, for shorebirds foraging on the beaches and echidnas sauntering about in the grasses. There's always a chance to see a rare and endemic White Wallaby grazing too.

Bruny Island is where Abel Tasman, Captain Cook and many other early seafarers explored... but not before the land was inhabited by Tasmanian Aborigines. A narrative about all things Bruny Island complements photo-taking activities throughout the day.



BRUNY ISLAND

including Cape Bruny and Adventure Bay (PODT.2)



shutterbug walkabouts

Discover, Experience *and* Photograph

Highlights .

- 'The Neck' game reserve and lookout
- Cape Bruny and Cape Bruny Lighthouse
- Breath-taking coastal scenery and rugged landscapes
- Be spellbound by pristine beaches; wander along the shoreline and enjoy the sand between your toes.
- Birdwatching opportunities
- Wildlife encounters, incl. chance of seeing white wallabies
- Seasonal variations
 - Endemic plants and native flowers
 - Whales on their annual migration
 - Beach-nesting shorebirds and their chicks
- Picnic in the surrounds of spectacular scenery
- Indulge in photo opportunities not achievable on regular tours

Includes.

- Private transport in stylish and spacious SUV
- Professional local guide providing insightful commentary
- Fully guided interpretive walks
- Practical hints and tips offered throughout the day
- National Park entry
- Vehicular ferry crossing
- Freshly baked sweet treat for morning tea
- Delicious picnic lunch featuring Tasmanian produce
- Locally roasted coffee and quality tea selection
- Premium Tasmanian non-alcoholic beverages
- Drinking water

Recommended departure

7.30am

Duration

10-11 hours



HARTZ MOUNTAINS & TAHUNE

including Tahune Airwalk and forest reserve (PODT.3)



shutterbug walkabouts

Discover, Experience *and* Photograph

About

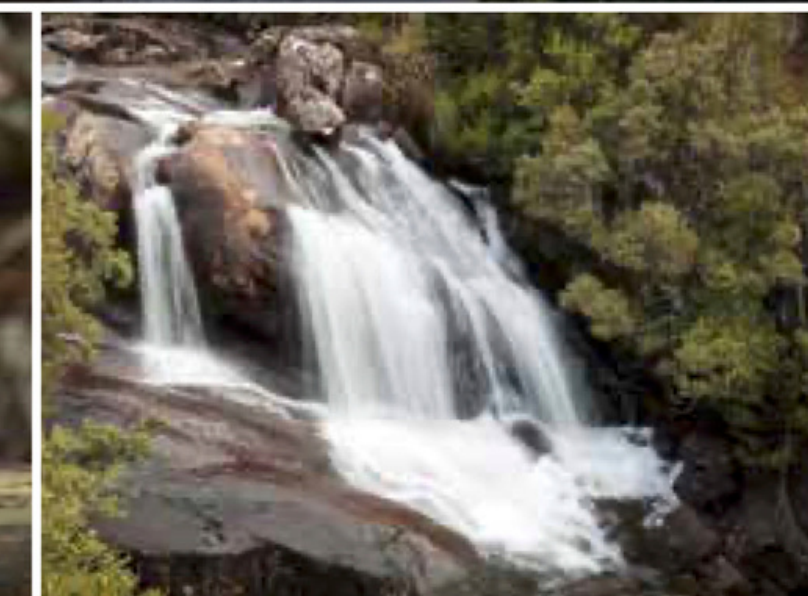
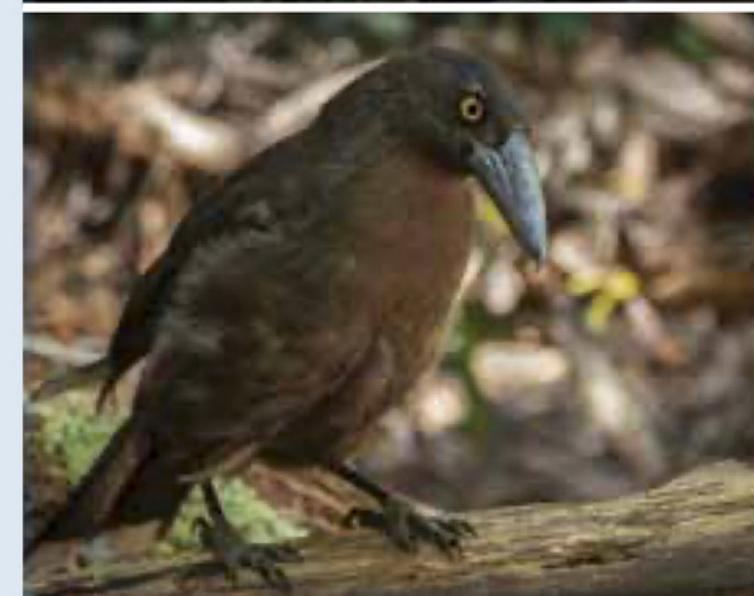
This tour takes our guests on a journey into the picturesque Huon Valley, travelling through the historic towns Huonville, Franklin and Geeveston. In these southern forests, there's a trove of natural treasures to explore.

The Hartz Mountains features an ancient landscape shaped by glaciers, jagged dolerite mountain peaks and a diverse natural environment of forest and heathland. We'll wander along a nature trail through alpine moorland to arrive at Osborne Lake – a glacial lake lined with endemic King Billy Pines. There's plenty of time to spend focusing on a diversity of photographic subjects or simply to soak up the tranquillity, before retracing our steps back through the moorland for another view of the landscape.

In the Tahune forest we ascend into the forest canopy on the Tahune Airwalk. This elevated walkway takes us to the treetops of blackwood, myrtle, sassafras and other Tasmanian native trees; a view from above that's not easily attained otherwise. From the cantilevered lookout the

views are spectacular, of the rivers below and the surrounding mountains. Back at ground level, explore a forest of ancient Huon Pines or take a longer walk to cross the Huon River on a swinging bridge.

After experiencing the magnificence of the southern forests, we return to Hobart and, if time permits, travel via Cygnet and the D'Entrecasteaux Channel for a scenic drive back to Hobart.



HARTZ MOUNTAINS & TAHUNE

including Tahune Airwalk and forest reserve (PODT.3)



shutterbug walkabouts

Discover, Experience *and* Photograph

Highlights

- Huon Valley's picturesque rural landscapes
- Historic townships of Franklin & Geeveston
- Walk amid ancient landscapes and up high in the forest canopy
- Birds-eye views over wild rivers
- See the endemic Huon Pine in the natural environment
- Wildlife encounters, incl. platypus and wombats
- Birdwatching opportunities
- Seasonal variations
 - Snow-capped mountains (any time of the year)
 - An assortment of extraordinary fungi and lichen
 - Endemic plants and native flowers
 - Tasmanian Waratah in bloom (summer)
- Picnic in the surrounds of nature's beauty
- Indulge in photo opportunities not achievable on regular tours

Includes

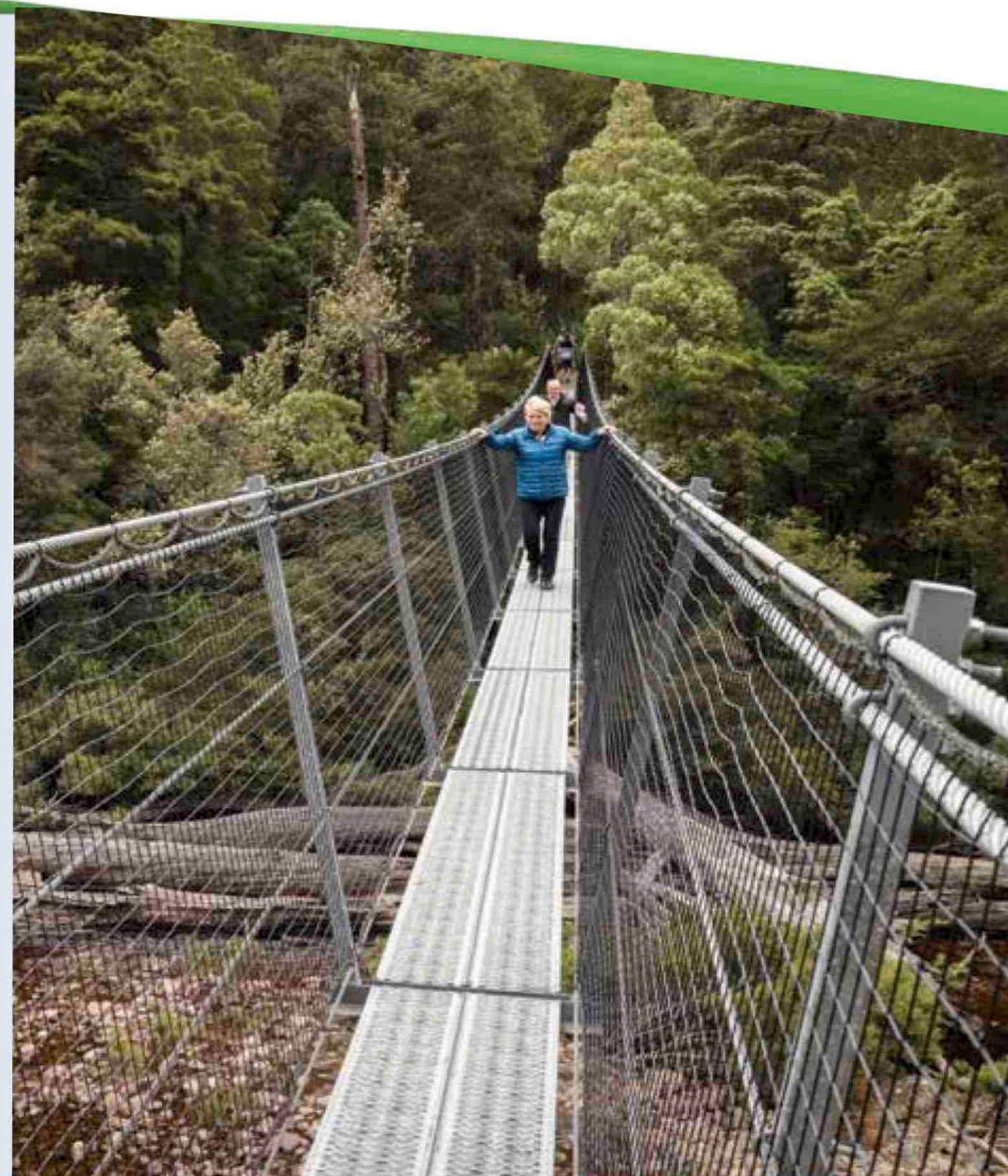
- Private transport in stylish and spacious SUV
- Professional local guide providing insightful commentary
- Fully guided interpretive nature walks
- Practical hints and tips offered throughout the day
- National Park entry
- Tahune Airwalk entry
- Freshly baked sweet treat for morning tea
- Scumptious picnic lunch featuring Tasmanian produce
- Locally roasted coffee and quality tea selection
- Premium Tasmanian non-alcoholic beverages
- Drinking water

Recommended departure

8.00am

Duration

9-10 hours



MARIA ISLAND

including Fossil Cliffs and Painted Cliffs (PODT.4)



shutterbug walkabouts

Discover, Experience *and* Photograph

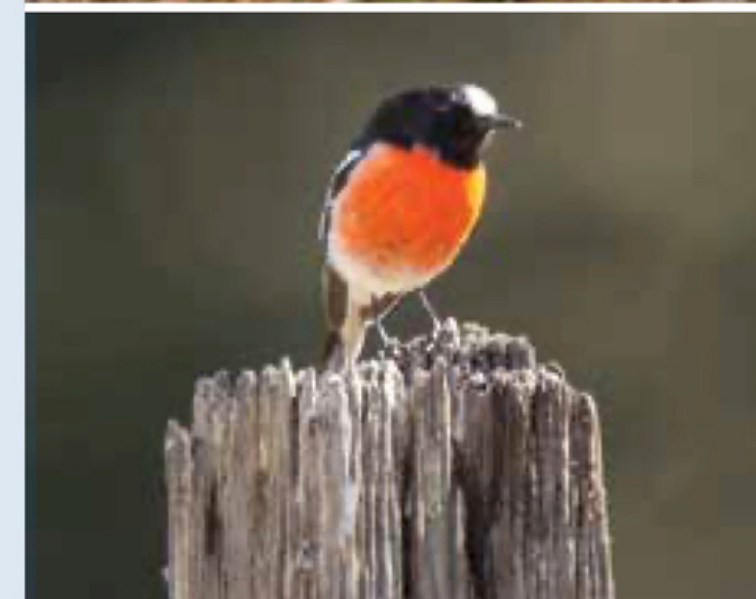
About

A trip to Maria Island is a must for anyone seeking an authentic Tasmanian nature and wildlife experience; most certainly for nature photography enthusiasts. As you set foot on this truly special place, one of the local wombats may welcome you to its island sanctuary; they'll certainly tempt you to stay longer at the end of the day.

Maria Island is a national park with sweeping bays, pristine beaches, rugged cliffs and mountains, remarkable birds and wildlife and a world-heritage listed convict settlement that pre-dates Port Arthur!

To get there, we take a ferry across the Mercury Passage; for a chance of seeing dolphins, seals, whales or seabirds. On the island, the walks are not overly challenging, the pace is relaxed allowing you to immerse yourself in all the sights and scenes. There's plenty of time to enjoy many a wildlife encounter, to indulge in an array of photo opportunities and take a restful break every now and then too.

You'll walk across a landscape steeped in history pausing at historic buildings and the ruins of the past along the way. Maria Island is also home to countless wombats, pademelons, wallabies and kangaroos, and several native bird species too. This is a day of walking; exploring Maria Island's natural environment and historical characteristics. Imagine the photos you could take!



MARIA ISLAND

including Fossil Cliffs and Painted Cliffs (PODT.4)



shutterbug walkabouts

Discover, Experience *and* Photograph

Highlights

- Vibrant sandstone stained cliffs
- Fossils embedded in ancient rock formations
- Rolling coastal landscapes and historic buildings
- Convict buildings and ruins
- Wildlife encounters, incl. the ever so adorable wombats
- Abundance of bird species to observe
- Seasonal variations
 - Baby wombats
 - Beach-nesting shorebirds and their chicks
 - Endemic plants and native flowers
- Picnic by a tranquil beach or in the forest and company of wildlife & birds
- Indulge in photo opportunities not achievable on regular walking tours

Includes..

- Private transport in stylish and spacious SUV
- Professional local guide providing insightful commentary
- Fully guided interpretive nature walks
- Photography guidance/instruction
- National Park entry
- Passenger ferry fare
- Morning tea
- Packed lunch including a bounty of tasty snacks, treats, fruit and juice
- Choice of premium Tasmanian beverage on return ferry
- Drinking water

Recommended departure

7.00am

Duration

12 hours



MOUNTAIN & WILDLIFE

Mount Wellington & Bonorong Wildlife Sanctuary (PODT.5)



shutterbug walkabouts

Discover, Experience *and* Photograph

About

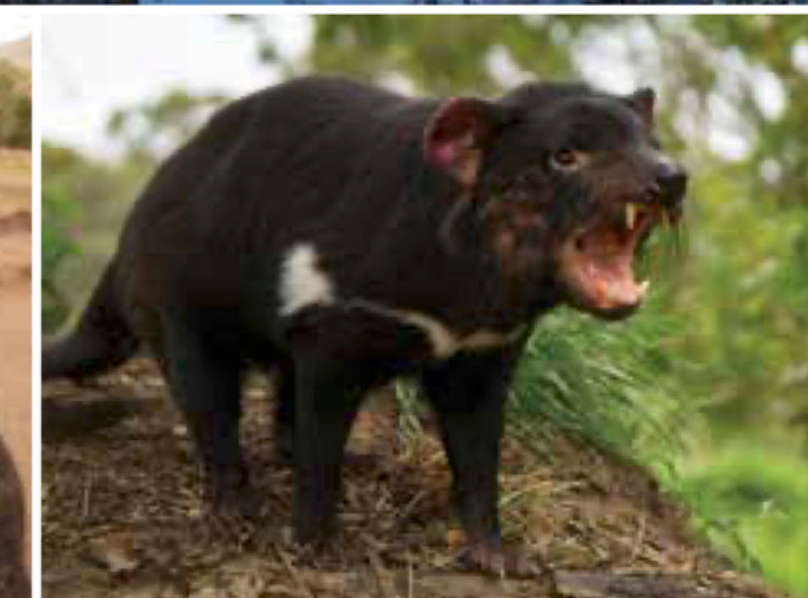
Focus on nature's beauty and Tasmania's extraordinary and endemic wildlife. This tour takes in Mt Wellington and Bonorong Wildlife Sanctuary for an authentic nature & wildlife experience.

From the foothills to 'The Springs', the 'organ pipes' and the pinnacle, kunanyi/Mt Wellington's natural environment is diverse and a truly unique living nature museum.

Explore impressive landscapes, rainforest, fern glades and sub-alpine habitats. And from the summit, breathtaking views over Hobart, the Derwent River and beyond.

Bonorong wildlife sanctuary is dedicated to rescue, rehabilitation and release of Tasmania's native wildlife. Meet and learn about an array of Australian animals like the iconic Tasmanian Devil, Bare-nosed Wombat and Forester Kangaroo. And there's a brilliant opportunity to hand-feed kangaroos.

Your guide is a talented nature and wildlife photographer, so throughout the day you have the chance to hone your skills and techniques for nature and wildlife photography to achieve unique photos, not just snapshots.



MOUNTAIN & WILDLIFE

Mount Wellington & Bonorong Wildlife Sanctuary (PODT.5)



shutterbug walkabouts

Discover, Experience *and* Photograph

Highlights

- Breathtaking panoramic views from the summit of Mt Wellington
- Discover the diversity of Tasmania's mountain environment
- Cool-climate rainforest habitat
- Rocky dolerite formations and landscape
- Visit Bonorong Wildlife Sanctuary
- Engage with wildlife up-close and personal
- Birdwatching opportunities
- Seasonal variations
 - Snow atop Mt Wellington
 - An assortment of extraordinary fungi and lichen
 - Endemic plants and native flowers
 - Tasmanian Waratah in bloom (summer)

Includes

- Private transport in stylish and spacious SUV
- Professional local guide providing insightful commentary
- Fully guided interpretive nature walks
- Photography guidance/instruction
- Entry into Bonorong Wildlife Sanctuary
- Exclusive 30-minute interactive animal encounter
- Deluxe picnic lunch featuring local and seasonal Tasmanian produce
- Fresh coffee and premium tea selection
- Premium Tasmanian non-alcoholic beverages
- Drinking water

Recommended departure

8.30am

Duration

8-9 hours



TASMAN PENINSULA

Coal Mines Historic Site and Natural Coastal Attractions (PODT.6)

(option to adapt to visit Port Arthur Historic Site)



shutterbug walkabouts

Discover, Experience *and* Photograph

About

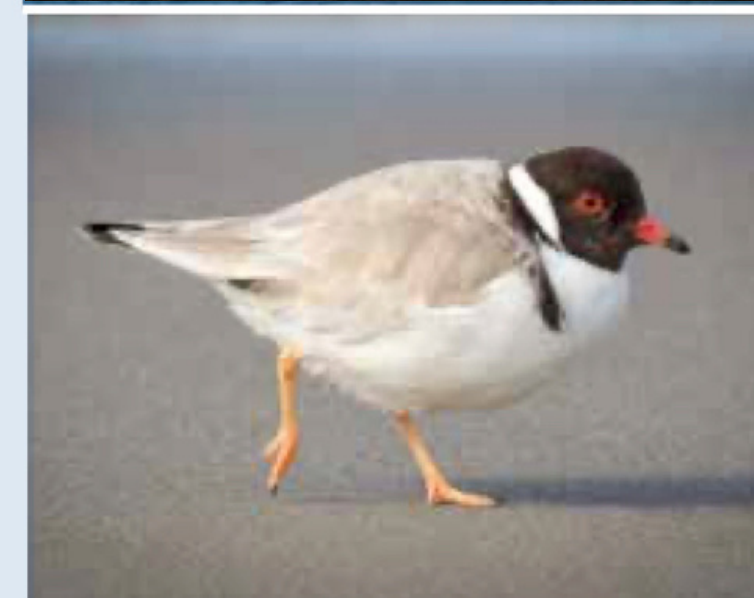
The Tasman Peninsula captivates visitors from around the globe, for its sublime and picturesque coastal scenery and impressive geological formations. It's also the location of Tasmania's most significant UNESCO World Heritage-listed convict settlements.

Travel through a landscape of rolling hills, eucalypt forests and a rugged coastline of towering sea cliffs.

Explore the ruins of convict-built structures and learn about the life of the convicts stationed on the Tasman Peninsula. Hear compelling stories of endurance and adversity during an era that Tasmania was known as Van Diemen's Land.

A considerable area of the Tasman Peninsula is protected by national park, and includes the mosaic-like Tessellated Pavement, situated on an intertidal rock shelf. Spend time exploring this spectacular coastline which is also home to an abundance of birds and wildlife. There may be plovers on the shoreline, eagles overhead, or even whales in the bay! Take advantage of your

guide's photographic know-how for unique photos, not just snapshots.



TASMAN PENINSULA

Coal Mines Historic Site and Natural Coastal Attractions (PODT.6)
(option to adapt for visit Port Arthur Historic Site)



shutterbug walkabouts

Discover, Experience and Photograph

Highlights

- UNESCO World Heritage-listed Coal Mines Historic Site
- Eaglehawk Neck and the 'Dog-Line'
- Pirates Bay Lookout
- Tessellated Pavement
- Selected natural attractions as time permits (e.g. Remarkable Cave, Tasman Arch, Devil's Kitchen, Waterfall Bay)
- Birdwatching opportunities, including beach-nesting shorebirds with their chicks (seasonal)
- Indulge in photo opportunities not achievable on regular tours

Includes.

- Private transport in stylish and spacious SUV
- Professional local guide providing insightful commentary
- Fully guided interpretive walks
- Photography guidance/instruction
- National Park entry
- Visit to Coal Mines Historic Site (*with option to adapt to visit Port Arthur Historic Site**)
- Freshly baked sweet treat for morning tea
- Locally roasted coffee and quality tea selection
- Deluxe picnic lunch featuring local and seasonal Tasmanian produce
- Drinking water

Recommended departure

8.00am

Duration

9-10 hours

** If visit to Port Arthur Historic Site is opted for, itinerary will be adapted accordingly - additional entry fees apply.*

